

CAT® 980H REPAIR OPTION

- ENGINE REPAIR
- DRIVE TRAIN REPAIR



Cat® 980H Wheel Loader
S/N Prefix: KZL, A8J

Cat C15 Engine
S/N Prefix: TXG, LHX



Now Come With
“FREE EPP”

Tractors Singapore



OUR REPAIR OPTIONS OFFERS

- Expert advice from qualified Cat® dealer specialists
- Highly skilled and trained technicians
- Used of genuine Cat parts
- 1 year warranty on parts and workmanship
- 5 Repair Options for Engine
- 5 Repair Options for Drive Train
- Tractors Singapore Limited (TSL) Machine Rebuild Options



FREE COVERAGE

2 Years

Equipment Protection Plans
for selected Repair Option.

980H — C15 ENGINE REPAIR OPTIONS

Repair Option	Description of Repair
Option 1	Fuel System Repair *** Additional charge of SGD\$250 at Tekong Island site.
Option 2	Top End Overhaul
Option 3	Complete Overhaul
Option 4	Remanufactured Engine / Components
Option 5	Build Your Own List (BYOL)

980H — DRIVE TRAIN REPAIR OPTIONS

Repair Option	Description of Repair
Option 1	Transmission complete with Torque Convertor and Output Transfer Gear Group, Transmission Oil Cooler and Transmission Pump
Option 2	Transmission Pump and Oil Cooler Group
Option 3	Front Fixed Axle Group complete with Housings, Brake and Planetary Group, Differential and Bevel Gear Group
Option 4	Rear Axle Group complete with Brake and Planetary Group, Differential and Bevel Gear Group and Trunnion Supports
Option 5	BYOL



980H — TSL MACHINE REBUILD OPTIONS (Free EPP)

Choose one engine overhaul		and	Choose at least one Level 2 Drive Train Repair	
Top End Overhaul	Complete Engine Overhaul	+	Drive Train Repair Option 1	
			Drive Train Repair Option 3	
			Drive Train Repair Option 4	

Click on picture to link to various options



980 — C15 ENGINE REPAIR OPTIONS

S/N Prefix: TXG, LHX

5 Repair Options Available

OPTION 1 Fuel System Repair	OPTION 2 Top End Overhaul	OPTION 3 Complete Overhaul + EPP	OPTION 4 Reman Engine/ Component	OPTION 5 BYOL
Field Service	Field Service	Workshop	Direct Parts Purchase	Direct Parts Purchase

Exclusion Items

- X Removal and installation of engine from and to machine.
- X Transportation.
- X Machining and metal fabrication works.
- X Servicing of radiator, aftercooler, hydraulic oil cooler, hydraulic brake pump, after cooler gear pump, transmission oil cooler
- X Uncouple and couple of transmission group w/c torque converter group.

Terms and Conditions:

- Add on charges for above additional work scopes or item replacement, if required.
- Customer to arrange lifting facility on site.
- Guarantee turnaround time exclude machining and metal fabrication works, weekends and public holidays.
- Guarantee turnaround time subject to parts availability.
- Additional charge of SGD\$250 for Fuel System Engine Repair at Tekong Island site.
- There will be no shelter, storage area, tooling or parts to be transported by passenger ferry to Tekong Island.
- Engine TEO job is applicable to Singapore mainland only.
- Lifting machine to be supplied by customer and lifting work to comply to safety regulation.

Guarantee turnaround time exclude machining and metal fabrication works, weekends and public holidays.

Major component excluded for complete engine overhaul

- | | |
|---|--|
| X Engine cylinder block & main bearing caps | X Flywheel assembly |
| X Crankshaft | X Rear housing |
| X Engine Control Module (ECM) | X Front housing |
| X Engine harnesses | X Front timing gears |
| X Air cleaner housing group | X Rear gears train |
| X Exhaust manifolds | X Engine mountings |
| X Damper and pulley | X Engine oil sump |
| X Blower/Suction fan assembly | X Air conditioner refrigerant compressor |

Terms and Conditions

- Offer valid till 22nd Dec 2025.
- All parts / service order must be placed thru the Sales Rep to enjoy special pricing. Not valid for use with other marketing program, discount or parts.cat.com.
- Model and serial no. required when placing order for the Repair Options.
- All parts used in the Repair Option is subjected to factory availability.
- Equipment Protection Plans (EPP) is valid for **2 years/ 5000 hours, whichever come first** and applicable to parts change during engine complete overhaul (Option 3).
- BYOL minimum purchase of S\$5,000 parts value, exclude core deposits, taxes or other charges.
- Parts purchased in BYOL are non-returnable and non-refundable.
- Guaranteed turnaround days also subject to parts availability.
- Other terms and conditions for quotation and sales order apply.
- Tractors Singapore Limited reserves the right to modify or cancel the program anytime.

Cat 980-C15 Engine Repair Options 1 to 5

	OPTION 1	OPTION 2	OPTION 3
Remove, install fuel transfer pump for exchange.	X		X
Remove, install fuel priming pump for recondition/replacement.	X		X
Re-program injectors with trim codes.	X		X
Replace engine oil filter, fuel filter and fuel water separator.	X		X
Replace valve cover seal / gasket.	X		X
Change engine lube oil with Cat DEO.	X	X	X
Remove, install and replace injector harness.	X	X	X
Remove, install all fuel injectors for exchange.	X	X	X
Remove, install turbocharger for recondition or exchange.		X	X
Remove, install cylinder head for recondition or exchange.		X	X
Remove, install and replace fan belt.		X	X
Remove, install valve mechanism group for recondition.		X	X
Remove, install exhaust manifolds for cleaning and checking.		X	X
Clean and inspect fumes disposal group and replace engine breather.		X	X
Clean and inspect fuel lines group.		X	X
Clean and inspect water lines and air lines group and replace seals and gaskets.		X	X
Replace water regulator and clean housing.		X	X
Replace top end overhaul gaskets and seals.		X	X
Change lube oil and filters.		X	X
Remove, install lube oil pump for recondition or exchange.			X
Remove, install fresh water pump for recondition or exchange.			X
Remove, install fan drive group for recondition.			X
Remove, install starter motor for recondition or exchange.			X
Remove, install alternator for recondition or exchange.			X
Clean and pressure test engine lube oil cooler.			X
Check engine wiring, harness and sensors.			X
Remove, install all pistons and rods for inspection and replace piston ring groups.			X
Remove, install crankshaft for checking.			X
Remove, install and replace crankshaft main and thrust bearings and con rod bearings			X
Remove, install camshaft for checking or replacement, if required.			X
Remove, install and clean flywheel housing and rear gear train for checking			X
Remove, install and clean front housing and front timing gears for checking.			X
Remove, install and clean flywheel for checking.			X
Clean and inspect cylinder block group and replace cylinder liners.			X
Clean and inspect oil lines.			X
Inspect/Replace hoses and clamps.			X
Replace all gaskets and seals.			X
Perform dynamometer test.			X
Carry out standard spray painting.			X
Start up and test engine.	X	X	X
Equipment Protection Plans (EPP)			X
Flat Rate SGD	\$6,900	\$26,500	\$41,000

OPTION 4		
10R9063	Short Block	S\$16,800
10R9068	Long Block	S\$25,500

OPTION 5
BYOL Up to 40% discount. Min. purchase of S\$5,000 to enjoy the special pricing



980H — DRIVE TRAIN REPAIR OPTIONS

S/N Prefix: KZL, A8J

980H — DRIVE TRAIN REPAIR OPTIONS

Repair Option	Description of Repair
Option 1	Transmission complete with Torque Convertor and Output Transfer Gear Group, Transmission Oil Cooler and Transmission Pump
Option 2	Transmission Pump and Oil Cooler Group
Option 3	Front Fixed Axle Group complete with Housings, Brake and Planetary Group, Differential and Bevel Gear Group
Option 4	Rear Axle Group complete with Brake and Planetary Group, Differential and Bevel Gear Group and Trunnion Supports
Option 5	BYOL

Exclusion work scope:

- Exclude reconditioning of hydraulic implement piston pump and brake and fan hydraulic pump.
- Exclude reconditioning of steering pump and secondary steering pump and motor.
- Exclude reconditioning of parking brake and replacement of brake system lines and hoses.
- Exclude replacement of cab group mounting.
- Exclude charging of air conditioning system refrigerant gas.
- Transportation of machine to/from TSL workshop.
- Machining and Metal Fabrication Works.

Add on charges for above additional work scopes, if required.

Terms and Conditions:

- Offer valid till 22nd Dec 2025.
- All parts / service order must be placed thru the Sales Rep to enjoy special pricing. Not valid for use with other marketing program, discount or parts.cat.com.
- Model and serial no. required when placing order for the Repair Options.
- Parts used in the Repair Option are subject to factory availability.
- Any guarantee turnaround time is subjected to parts availability.
- Equipment Protection Plans (EPP) is valid for **2 years/ 5000 hours, whichever come first** and applicable to parts change during **Level 2 Drive Train Repair Option 1, 3 & 4.**
- BYOL minimum purchase of S\$5,000 parts value, exclude core deposits, taxes or other charges.
- Parts purchased in BYOL are non-returnable and non-refundable.
- Other terms and conditions for quotation and sales order apply.
- Tractors Singapore Limited reserves the right to modify or cancel the program anytime.



Level 1 Rebearing and Reseal

- Extend Component Life
- Preventive Maintenance Repair

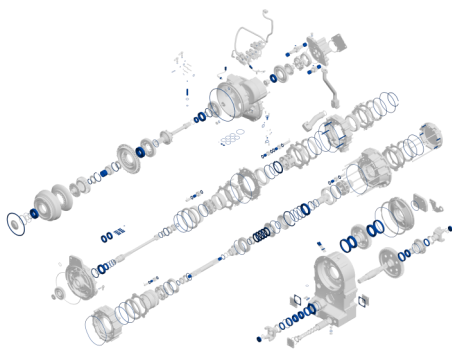
Level 2 Recondition

- Restore Component Life
- Corrective Repair

CAT 980H—DRIVE TRAIN REPAIR OPTIONS 1

Transmission complete with Torque Converter and Output Transfer Gear Group, Transmission Oil Cooler and Transmission Pump

Workscope	Level 1	Level 2
To remove & install transmission c/w torque converter & output transfer gear group, transmission oil cooler and transmission oil pump group from/to machine.	✓	✓
To clean and pressure test transmission oil cooler.	✓	✓
To disassemble & assemble transmission c/w torque converter group & output transfer gear group and transmission oil pump for resealing and re-bearing.	✓	
To replace worn off seals, bearings and gaskets (excludes clutch friction discs & plates, pistons & clutch housings, gears & housings, shafts, valve spools and valve groups, torque converter impeller, stator, turbine wheel and housings, carriers, yokes & flanges, harnesses, transmission oil cooler group and transmission pump group).	✓	
To disassemble & assemble transmission c/w torque converter & output transfer gear group, and transmission oil pump for inspection and reconditioning.		✓
To replace worn off seals, bearings and gaskets, worn clutch friction discs & plates, worn torque converter impeller, stator, turbine wheel, if required (excludes pistons & clutch housings, gears & housings, shafts, valve spools and valve groups, housings, carriers, yokes & flanges, harnesses, transmission oil cooler group and transmission pump group).		✓
To replace transmission oil, oil filter and seals.	✓	✓
To perform pressure test and adjust settings to specifications.	✓	✓
To perform functional test upon job completion.	✓	✓
Equipment Protection Plans (EPP)		✓
Flat Rate SGD	\$37,900	\$52,500



Level 1 Rebearing and Reseal	Level 2 Recondition
<ul style="list-style-type: none"> Extend Component Life Preventive Maintenance Repair 	<ul style="list-style-type: none"> Restore Component Life Corrective Repair

Note: This drawing illustrates only some of the Repair Option parts. If you wish to know the specific parts included in each of the repair options, please refer to the work scope and contact your Parts & Service Sales Rep.

CAT 980H—DRIVE TRAIN REPAIR OPTIONS 2

Transmission Pump and Oil Cooler Group Repair

Workscope	Level 1	Level 2
To remove and install transmission gear pump and transmission oil cooler group from/to machine.	✓	✓
To clean and pressure test transmission oil cooler.	✓	✓
To disassemble and assemble transmission gear pump for resealing and re-bearing.	✓	✓
To replace transmission oil filter and seals.	✓	✓
To perform functional test upon job completion.	✓	✓
Flat Rate SGD	\$4,800	\$7,500

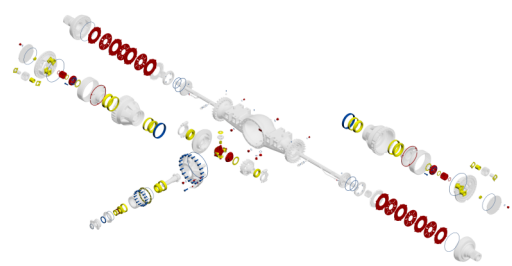


Level 1 Rebearing and Reseal	Level 2 Recondition
<ul style="list-style-type: none">▪ Extend Component Life▪ Preventive Maintenance Repair	<ul style="list-style-type: none">▪ Restore Component Life▪ Corrective Repair

CAT 980H—DRIVE TRAIN REPAIR OPTIONS 3

Front Fixed Axle Group c/w Housings, Brake and Planetary Group, Differential and Bevel Gear Group

Workscope	Level 1	Level 2
To remove and install front axle group, front drive shaft and both sides tyres to facilitate repair.	✓	✓
To disassemble and assemble front axle brake and planetary group, differential and bevel gear group for resealing and rebearing.	✓	
To replace worn brake seals and O-rings, bearings and bushings and thrust washers (exclude brake friction discs and plates, carrier and gears, axle shafts, drive shaft and housings).	✓	
To disassemble and assemble front axle brake and planetary group, differential and bevel gear group for inspection and reconditioning.		✓
To replace worn brake seals and O-rings, bearings and bushings and thrust washers, worn brake friction discs and plates (exclude carrier and gears, axle shafts, drive shaft and housings).		✓
To perform functional test upon job completion.	✓	✓
Equipment Protection Plans (EPP)		✓
Flat Rate SGD	\$13,700	\$25,300



Level 1 Rebearing and Reseal	Level 2 Recondition
<ul style="list-style-type: none"> ▪ Extend Component Life ▪ Preventive Maintenance Repair 	<ul style="list-style-type: none"> ▪ Restore Component Life ▪ Corrective Repair

Note: This drawing illustrates only some of the Repair Option parts. If you wish to know the specific parts included in each of the repair options, please refer to the work scope and contact your Parts & Service Sales Rep.

CAT 980H—DRIVE TRAIN REPAIR OPTIONS 4

Rear Axle Group c/w Brake and Planetary Group,
Differential and Bevel Gear Group and Trunnion Supports

Workscope	Level 1	Level 2
To remove and install rear axle group & trunnion supports, rear drive shaft and both sides tyres to facilitate repair.	✓	✓
To disassemble and assemble rear axle brake & planetary group, differential and bevel gear group for resealing and rebearing.	✓	
To replace worn brake seals & O-rings, bearings & bushings and thrust washers, (exclude brake friction discs & plates, carrier & gears, axle shafts, trunnion supports, drive shaft and housings).	✓	
To disassemble and assemble rear axle brake & planetary group, differential and bevel gear group for inspection and reconditioning.		✓
To replace worn brake seals & O-rings, bearings & bushings and thrust washers, worn brake friction discs & plates (exclude carrier & gears, axle shafts, trunnion supports, drive shaft and housings).		✓
To clean and inspect trunnion supports and replace worn seals and bushings.	✓	✓
To perform functional test upon job completion.	✓	✓
Equipment Protection Plans (EPP)		✓
Flat Rate SGD	\$15,800	\$27,600



Level 1 Rebearing and Reseal	Level 2 Recondition
<ul style="list-style-type: none"> Extend Component Life Preventive Maintenance Repair 	<ul style="list-style-type: none"> Restore Component Life Corrective Repair

Note: This drawing illustrates only some of the Repair Option parts. If you wish to know the specific parts included in each of the repair options, please refer to the work scope and contact your Parts & Service Sales Rep.

CAT 980H—DRIVE TRAIN REPAIR OPTIONS 5

Build Your Own List (BYOL)

***We Heard You.
So we have another option shaped for you.***

Build Your Own List

Buy genuine Cat parts from
Tractors Singapore
at discounted price of up to

40% Off



***Going to perform the repair with your own team? Then this is the option for you.
Send us your repair part list for this machine and enjoy a special pricing when you purchase at least
S\$5,000 of Cat parts.***

Terms and Conditions

- Offer valid till 22nd Dec 2025.
- All parts / service order must be placed thru the Sales Rep to enjoy special pricing. Not valid for use with other marketing program, discount or parts.cat.com.
- Model and serial no. required when placing order for the Repair Options.
- All parts used in the Repair Option is subject to factory availability.
- BYOL minimum purchase of S\$5,000 parts value, exclude core deposits, taxes or other charges.
- Parts purchased in BYOL are non-returnable and non-refundable.
- Other terms and conditions for quotation and sales order apply.
- Tractors Singapore Limited reserves the right to modify or cancel the program anytime.

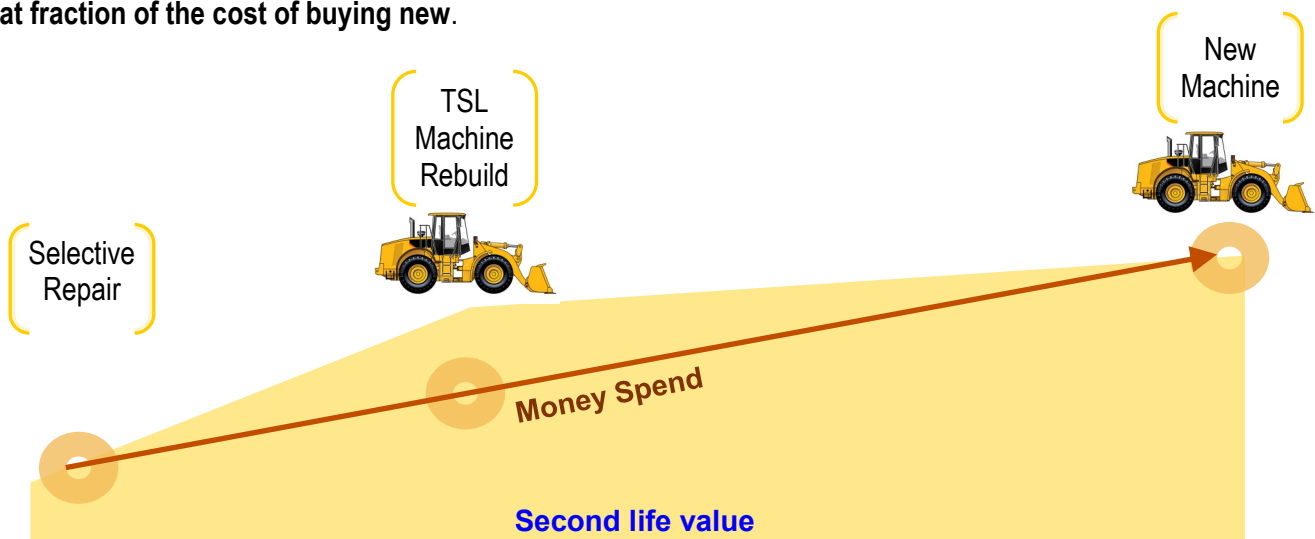


980H — TSL MACHINE REBUILD

COMBINE ONE POWER TRAIN COMPONENT REPAIR AND MACHINE SYSTEM REPAIR

TSL Machine Rebuild

Cat equipment and components are built to perform not for one lifetime, but for multiple lifetimes. Don't let that extra value go to waste. Take advantage of our TSL machine rebuild program and extend your machine life, **at fraction of the cost of buying new.**



What is required for a TSL Machine Rebuild?

Combine **ONE POWER TRAIN COMPONENT REPAIR AND MACHINE SYSTEM REPAIR (Level 2)** as TSL Machine Rebuild.

Get additional **DISCOUNT** when you choose to rebuild your machine with us.

**ENGINE TOP
END
OVERHAUL**

OR

**ENGINE
COMPLETE
OVERHAUL**

Cat Financing is available at very low interest rate! Check with us for more details.

Plus either one of below

DT RO1
Transmission complete with Torque Converter and Output Transfer Gear Group, Transmission Oil Cooler and Transmission Pump

DT RO3
Front Fixed Axle Group complete with Housings, Brake and Planetary Group, Differential and Bevel Gear Group

DT RO4
Rear Axle Group complete with Brake and Planetary Group, Differential and Bevel Gear Group and Trunnion Supports



FREE COVERAGE

Did you know we have other Repair Options available for your other Cat® machine?

Couldn't find a Repair Option suitable for your machine?



SPEAK TO US!

At Tractors Singapore, we ensure that you get the best advice and service from our highly skilled dealer specialist to keep your equipment performing at its best.

Lee Tiong Heng

Tel: +65 9232 7608

Email: lee.tiong.heng@tractors.sime.com

Ron Woo

HP: +65 9232 7617

Email: woo.chung.wai@tractors.sime.com

Jeffrey Wong

HP: +65 9231 5138

Email: jeffrey.wong.ky@tractors.sime.com

Jasper Yin

HP: +65 9232 7622

Email: jasper.yin.yl@tractors.sime.com

Tractors Singapore Limited

26 Benoi Sector, Singapore 629858

Tel: (65) 6663 8890

Email: parts.tsl@tractors.sime.com



Tractors Singapore

