

# CAT® D6R, II ,III REPAIR OPTION

(LGP/ 4TR/ BPZ/ BRZ/ BPP/ S6Y/ S6T/ S6X/ PPP/ SSS)

- DRIVE TRAIN
- POWERSHIFT TRANSMISSION



**Want more affordability?**

We've got the solution.

**Need a fast turnaround?**

We've got a solution for that too.

**Like the Peace of mind of expertly trained specialists?**

That comes as standard.

Our Cat® Repair Options are shaped around you.



**Now Come With  
“FREE EPP”**

**Tractors Singapore**



# OUR REPAIR OPTIONS

MORE CHOICE TO KEEP YOUR BUSINESS MOVING

- ▶ Choice of SIX Repair Options
- ▶ Caterpillar certified technicians
- ▶ Genuine Cat parts
- ▶ Fixed prices—no hidden extras
- ▶ Guaranteed completion time\*
- ▶ 1 year warranty on parts and workmanship

\* Guaranteed completion time subject to parts availability



**FREE COVERAGE**

**2 Years**

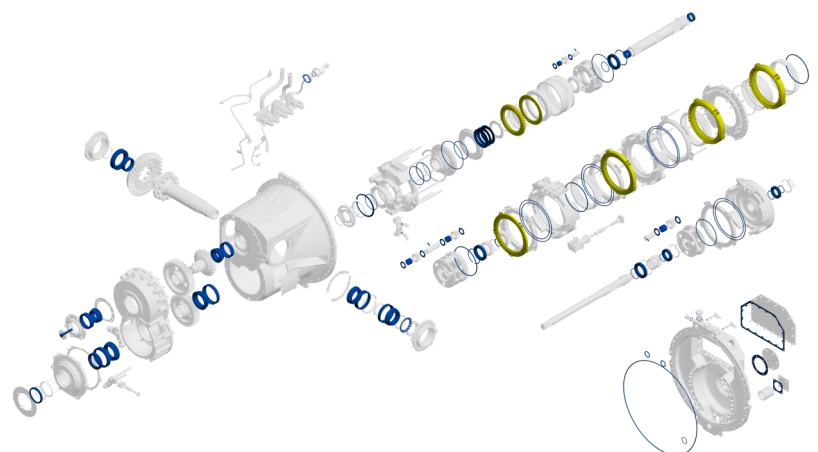
Equipment Protection Plans  
for selected Repair Option.

**CAT® D6R, II, III (S/N Prefix: LGP/ 4TR / BPZ/ BRZ/ BPP/ S6Y/ S6T/ S6X/ PPP/ SSS)**

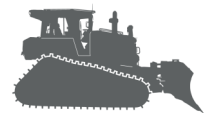
OPTION 1	OPTION 2	OPTION 3	OPTION 4	OPTION 5
Transmission, Torque Converter Group, Transmission Oil Cooler and Pump	Powershift Transmission complete with Bevel Gear Group	Torque Converter, Transmission Pump and Oil Cooler Group	Torque Converter Group	Final Drive Group

## OPTION 6

BYOL



Note: This drawing illustrates only some of the Repair Option parts. If you wish to know the specific parts included in each of the repair options, please refer to the work scope and contact your Parts and Service Sales Rep.





# Repair Option 1 : Transmission, Torque Converter Group, Transmission Oil Cooler and Pump

WORKSCOPE	LEVEL 1	LEVEL 2
To remove & install transmission c/w bevel gear group, torque converter group, transmission oil cooler and transmission oil pump group from/to machine.	✓	✓
To clean and pressure test transmission oil cooler.	✓	✓
To disassemble & assemble transmission c/w bevel gear group, torque converter group and oil pump for resealing and re-bearing.	✓	
To disassemble & assemble transmission c/w bevel gear group, torque converter group, and oil pump for inspection and reconditioning.		✓
To replace worn off seals, bearings and gaskets (excludes clutch friction discs & plates, pistons & clutch housings, gears & housings, shafts, valve spools and valve groups, torque converter impeller, stator, turbine wheel and housings, carriers, yokes & flanges, transmission oil cooler group and transmission pump group).	✓	
To replace worn off seals, bearings and gaskets, worn clutch friction discs & plates, worn torque converter impeller, stator, turbine wheel, if required (excludes pistons & clutch housings, gears & housings, drive shafts, valve spools and valve groups, housings, carriers, yokes & flanges, transmission oil cooler group and transmission pump group).		✓
To replace transmission oil, oil filter and seals.	✓	✓
To perform pressure test and adjust settings to specifications.	✓	✓
To perform functional test upon job completion.	✓	✓
Equipment Protection Plans (EPP)		✓
<b>Flat Rate SGD</b>	<b>17,000</b>	<b>28,500</b>
<p><i>Exclusions:</i></p> <ul style="list-style-type: none"> <li>• Transportation of machine to/from Tractors Singapore Limited (TSL) workshop</li> <li>• Machining and metal fabrication works</li> </ul> <p>Add on charges for above additional work scopes, if require.</p> <p><i>Terms and Condition apply.</i></p>		

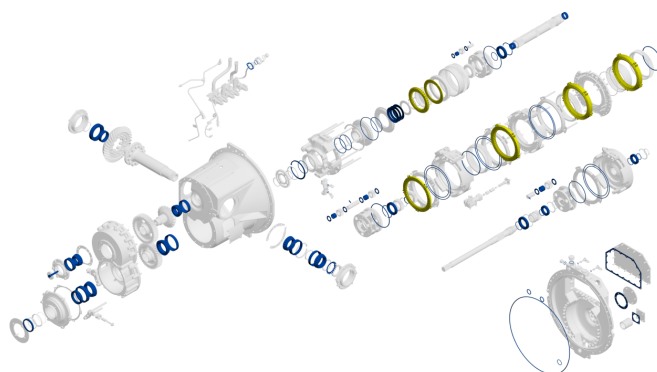
LEVEL 1 Rebearing and Reseal	LEVEL 2 Rebuild
<ul style="list-style-type: none"> <li>• Extend Component Life</li> <li>• Preventive Maintenance Repair</li> </ul>	<ul style="list-style-type: none"> <li>• Restore Component Life</li> <li>• Corrective Repair</li> </ul>



## Repair Option 2 : Powershift Transmission complete with Bevel Gear Group

WORKSCOPE	LEVEL 1	LEVEL 2
To remove & install transmission c/w bevel gear group from/to machine.	✓	✓
To disassemble & assemble transmission c/w bevel gear group for resealing and re-bearing.	✓	
To replace worn off seals, transmission oil filter, bearings & gaskets, (excludes clutch friction discs & plates, pistons & clutch housings, gears & housings, shafts, valve spools and valve groups).	✓	
To disassemble & assemble transmission c/w bevel gear group for inspection & reconditioning.		✓
To replace worn off seals, bearings & gaskets, transmission oil filter and worn clutch friction discs & plates (excludes pistons & clutch housings, gears & housings, drive shafts, valve spools and valve groups).		✓
To replace transmission oil, oil filter and seals.	✓	✓
To perform pressure test and adjust settings to specifications.	✓	✓
To perform functional test upon job completion.	✓	✓
Equipment Protection Plans (EPP)		✓
<b>Flat Rate SGD</b>	<b>12,900</b>	<b>18,000</b>
<p><i>Exclusions:</i></p> <ul style="list-style-type: none"> <li>• Transportation of machine to/from TSL workshop</li> <li>• Machining and metal fabrication works</li> </ul> <p>Add on charges for above additional work scopes, if require.  <i>Terms and Condition apply.</i></p>		

LEVEL 1 Rebearing and Reseal	LEVEL 2 Rebuild
<ul style="list-style-type: none"> <li>• Extend Component Life</li> <li>• Preventive Maintenance Repair</li> </ul>	<ul style="list-style-type: none"> <li>• Restore Component Life</li> <li>• Corrective Repair</li> </ul>



Note: This drawing illustrates only some of the Repair Option parts. If you wish to know the specific parts included in each of the repair options, please refer to the work scope and contact your Parts and Service Sales Rep.

## Repair Option 3 : Torque Converter, Transmission Pump and Oil Cooler Group

WORKSCOPE	LEVEL 1	LEVEL 2
To remove & install torque converter, transmission gear pump and oil cooler group from/to machine.	✓	✓
To clean and pressure test transmission oil cooler.	✓	
To disassemble & assemble torque converter, transmission gear pump for resealing and re-bearing.	✓	
To replace worn off seals, bearings and gaskets (excludes torque converter impeller, stator assembly, turbine wheel, carrier assembly, gears & housings, shafts, valve spools & valve groups, yoke & flange, transmission oil cooler group and transmission pump group).	✓	
To disassemble & assemble torque converter, transmission gear pump for inspection and reconditioning.		✓
To replace worn off seals, bearings and gaskets, torque converter impeller, stator assembly, turbine wheel, if required (excludes carrier assembly, gears & housings, drive shafts, valve spools & valve groups, yoke and flange, transmission oil cooler group and transmission pump group).		✓
To replace transmission oil, oil filter and seals.	✓	✓
To perform functional test upon job completion.	✓	✓
<b>Flat Rate SGD</b>	<b>6,100</b>	<b>12,500</b>
<p><i>Exclusions:</i></p> <ul style="list-style-type: none"> <li>• Transportation of machine to/from TSL workshop</li> <li>• Machining and metal fabrication works</li> </ul> <p>Add on charges for above additional work scopes, if require.  <i>Terms and Condition apply.</i></p>		

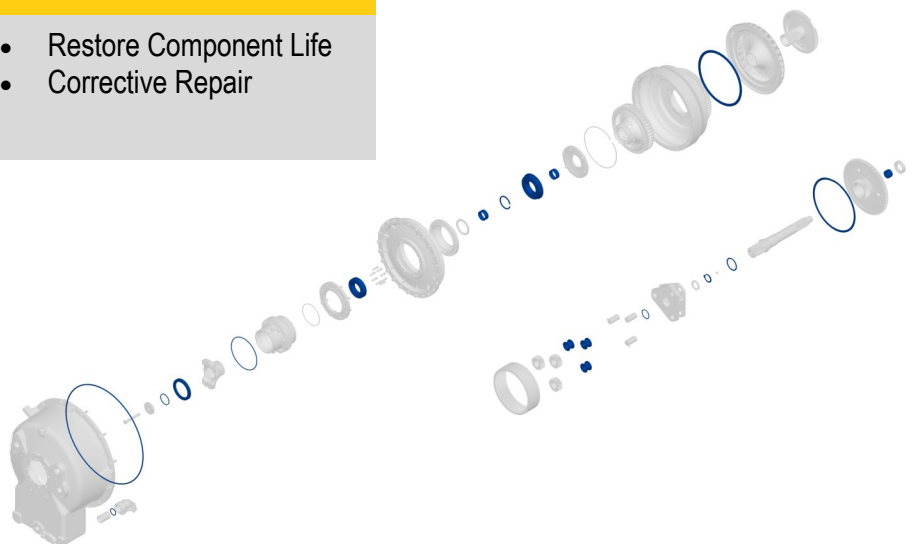
LEVEL 1 Rebearing and Reseal	LEVEL 2 Rebuild
<ul style="list-style-type: none"> <li>• Extend Component Life</li> <li>• Preventive Maintenance Repair</li> </ul>	<ul style="list-style-type: none"> <li>• Restore Component Life</li> <li>• Corrective Repair</li> </ul>



## Repair Option 4 : Torque Converter Group

WORKSCOPE	LEVEL 1	LEVEL 2
To remove & install torque converter group from/to machine.	✓	✓
To disassemble & assemble torque converter group for resealing and re-bearing.	✓	
To replace worn off seals, bearings & gaskets and transmission oil filter (excludes impeller, stator assembly, turbine wheel, carrier assembly, gears & housings, shafts, valve spools & valve groups, yoke and flange).	✓	
To disassemble & assemble torque converter group for inspection & reconditioning.		✓
To replace worn off seals, bearings & gaskets, worn impeller, stator assembly, turbine wheel, if required (excludes carrier assembly, gears & housings, shafts and valve spools & valve groups, yoke and flange).		✓
To replace transmission oil, oil filter and seals.	✓	✓
To perform pressure test and adjust settings to specifications.	✓	✓
To perform functional test upon job completion.	✓	✓
<b>Flat Rate SGD</b>	<b>4,800</b>	<b>9,400</b>
<p><b>Exclusions:</b></p> <ul style="list-style-type: none"> <li>• Transportation of machine to/from TSL workshop</li> <li>• Machining and metal fabrication works</li> <li>• Removal and install of rear attachment such as drawbar, winch, etc.</li> </ul> <p>Add on charges for above additional work scopes, if require. Terms and Condition apply.</p>		

LEVEL 1 Rebearing and Reseal	LEVEL 2 Rebuild
<ul style="list-style-type: none"> <li>• Extend Component Life</li> <li>• Preventive Maintenance Repair</li> </ul>	<ul style="list-style-type: none"> <li>• Restore Component Life</li> <li>• Corrective Repair</li> </ul>

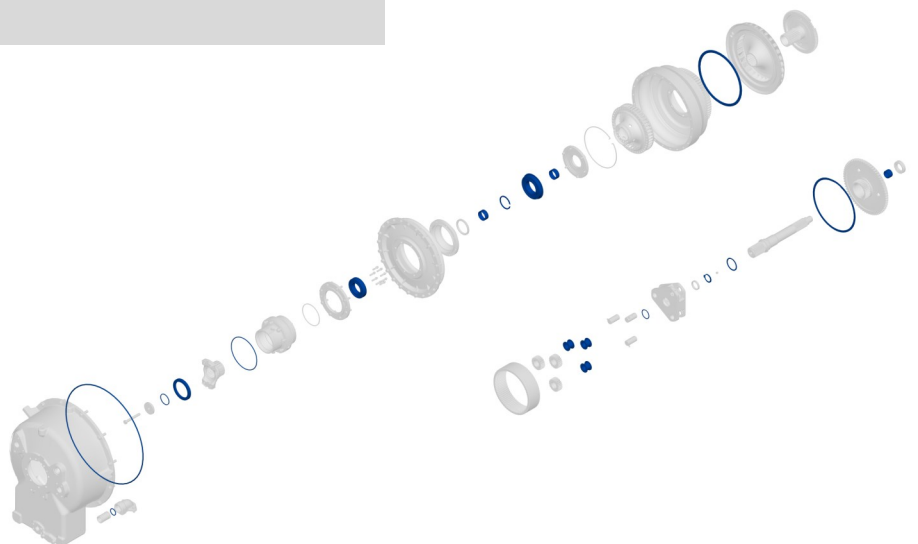


Note: This drawing illustrates only some of the Repair Option parts. If you wish to know the specific parts included in each of the repair options, please refer to the work scope and contact your Parts and Service Sales Rep.

## Repair Option 5 : Final Drive Group

WORKSCOPE	LEVEL 1	LEVEL 2
To remove & install track group from/to machine.	✓	✓
To remove & install final drive group from/to machine.	✓	✓
To disassemble & assemble final drive group. To replace worn off seals, bearings and seal group, (excludes sprocket segments & hardware, axle shaft, final drive hub, spindle, carrier & cover, ring gear, planetary gears & shafts and sun gear.	✓	
To disassemble & assemble final drive group. To replace worn off seals, bearings, seal group and planetary shaft (excludes sprocket segments & hardware, axle shaft, final drive hub, spindle, carrier & cover, ring gear, planetary gears and sun gear.		✓
To replace final drive oil and to perform functional test upon job completion.	✓	✓
Equipment Protection Plans (EPP)		✓
<b>Flat Rate SGD</b>	<b>5,600</b>	<b>6,300</b>
<p><b>Exclusions:</b></p> <ul style="list-style-type: none"> <li>• Transportation of machine to/from TSL workshop</li> <li>• Machining and metal fabrication works</li> <li>• Removal and install of rear attachment such as drawbar, winch, etc.</li> </ul> <p>Add on charges for above additional work scopes, if require. Terms and Condition apply.</p>		

LEVEL 1 Rebearing and Reseal	LEVEL 2 Rebuild
<ul style="list-style-type: none"> <li>• Extend Component Life</li> <li>• Preventive Maintenance Repair</li> </ul>	<ul style="list-style-type: none"> <li>• Restore Component Life</li> <li>• Corrective Repair</li> </ul>



Note: This drawing illustrates only some of the Repair Option parts. If you wish to know the specific parts included in each of the repair options, please refer to the work scope and contact your Parts and Service Sales Rep.

## Repair Option 6 : BYOL (Build Your own List)

***We Hear You.***

***So we have another option shaped for you.***

# Build Your Own List

Buy genuine Cat parts from  
Tractors Singapore  
at discounted price of up to

# 40%

---

### **Terms and Conditions**

- Offer valid till 22nd Dec 2025.
- Applicable to specific Cat equipment model only.
- Model and serial no. is required when placing order for the Repair Options.
- All turnaround days exclude weekends, public holidays, machining and metal fabrication works.
- All parts / service order must be placed thru the Sales Rep to enjoy special pricing. Not valid for use with other marketing program, discount or parts.cat.com.
- All parts used in the Repair Option is subjected to factory availability.
- Equipment Protection Plans (EPP) is valid for **2 years/ 5000 hours, whichever come first** and applicable to parts change during **Level 2 Drive Train Repair Option 1, 2 & 5.**
- BYOL minimum purchase of S\$5,000 parts value, exclude core deposits, taxes or other charges.
- BYOL only for specific parts that will be used in this D6R & D6R III Powershift transmission Repair Option.
- Parts purchased in BYOL are non-returnable and non-refundable.
- Other terms and conditions for quotation and sales order apply.
- Tractors Singapore Limited reserves the right to modify or cancel the program anytime.

***Did you know we have other Repair Options available for your other Cat machine?***

*Speak with us.*

At Tractors Singapore, we ensure that you get the best advice and service from our highly skilled dealer specialist to keep your equipment performing at its best.

**Lee Tiong Heng @ +65 9232 7608**  
[lee.tiong.heng@tractors.sime.com](mailto:lee.tiong.heng@tractors.sime.com)

**Ron Woo @ +65 9232 7617**  
[woo.chung.wai@tractors.sime.com](mailto:woo.chung.wai@tractors.sime.com)

**Jeffrey Wong @ +65 9231 5138**  
[jeffrey.wong.ky@tractors.sime.com](mailto:jeffrey.wong.ky@tractors.sime.com)

**Jasper Yin @ +65 9232 7622**  
[jasper.yin.yl@tractors.sime.com](mailto:jasper.yin.yl@tractors.sime.com)

**Tractors Singapore Limited**  
26 Benoi Sector, Singapore 629858  
Tel: (65) 6261 2222  
Email: [parts.tsl@tractors.sime.com](mailto:parts.tsl@tractors.sime.com)



**Tractors Singapore**

